

MONTHLY MEMBERSHIP PROGRESS REPORT

LOCATION INDIA

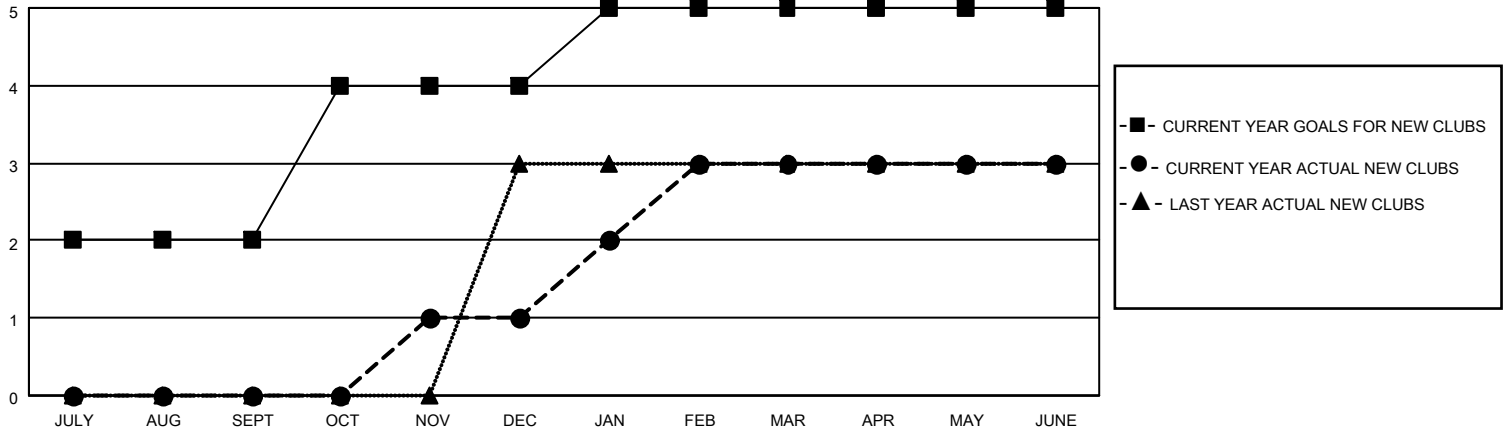
District 322C5

Results as of: 6/30/2022

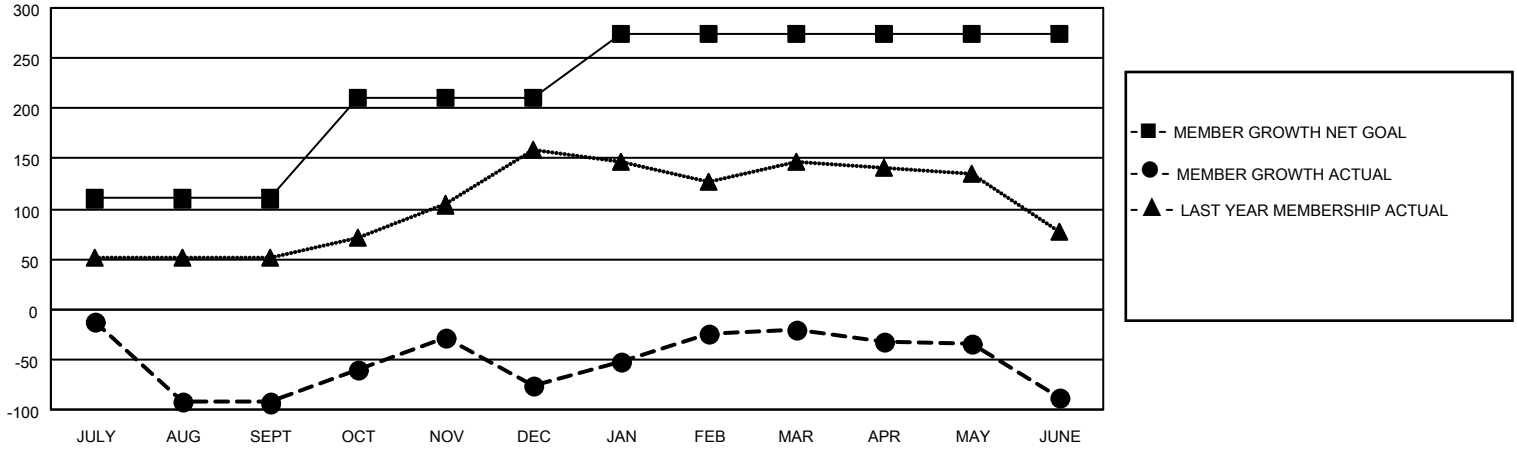
Clubs			
RESULTS FOR 2021-2022			
QUARTER	NEW CLUB GOAL	NEW CLUBS	DROPPED CLUBS
JULY/AUG/SEPT	2	0	5
OCT/NOV/DEC	2	1	2
JAN/FEB/MAR	1	2	0
APR/MAY/JUNE	0	0	1

Members			
RESULTS FOR 2021-2022			
QUARTER	MEMBER GROWTH NET GOAL	MEMBER GROWTH ACTUAL	DROPPED MEMBERS ACTUAL (including transfers)
JULY/AUG/SEPT	110	8	96
OCT/NOV/DEC	100	83	64
JAN/FEB/MAR	65	57	2
APR/MAY/JUNE	0	49	115

GOALS AND ACTUAL NEW CLUBS CUMULATIVE



GOALS AND ACTUAL MEMBERS CUMULATIVE



DROPPED CLUBS: 8

29 CLUBS OF 53 ADDED 1 OR MORE NEW MEMBERS

GENDER DISTRIBUTION

MALE	837 (58.74%)
FEMALE	588 (41.26%)
NON BINARY	0 (0.00%)
PREFER NOT TO ANSWER	0 (0.00%)

DROPPED MEMBERS

[CLICK HERE FOR CUMULATIVE MEMBERSHIP DATA](#)

DECEASED	7
CLUB CANCELLED	108
OTHER	162
TOTAL	277

TOTAL FAMILY UNIT MEMBERS 1,178

FAMILY MEMBERS PAYING HALF DUES 834